



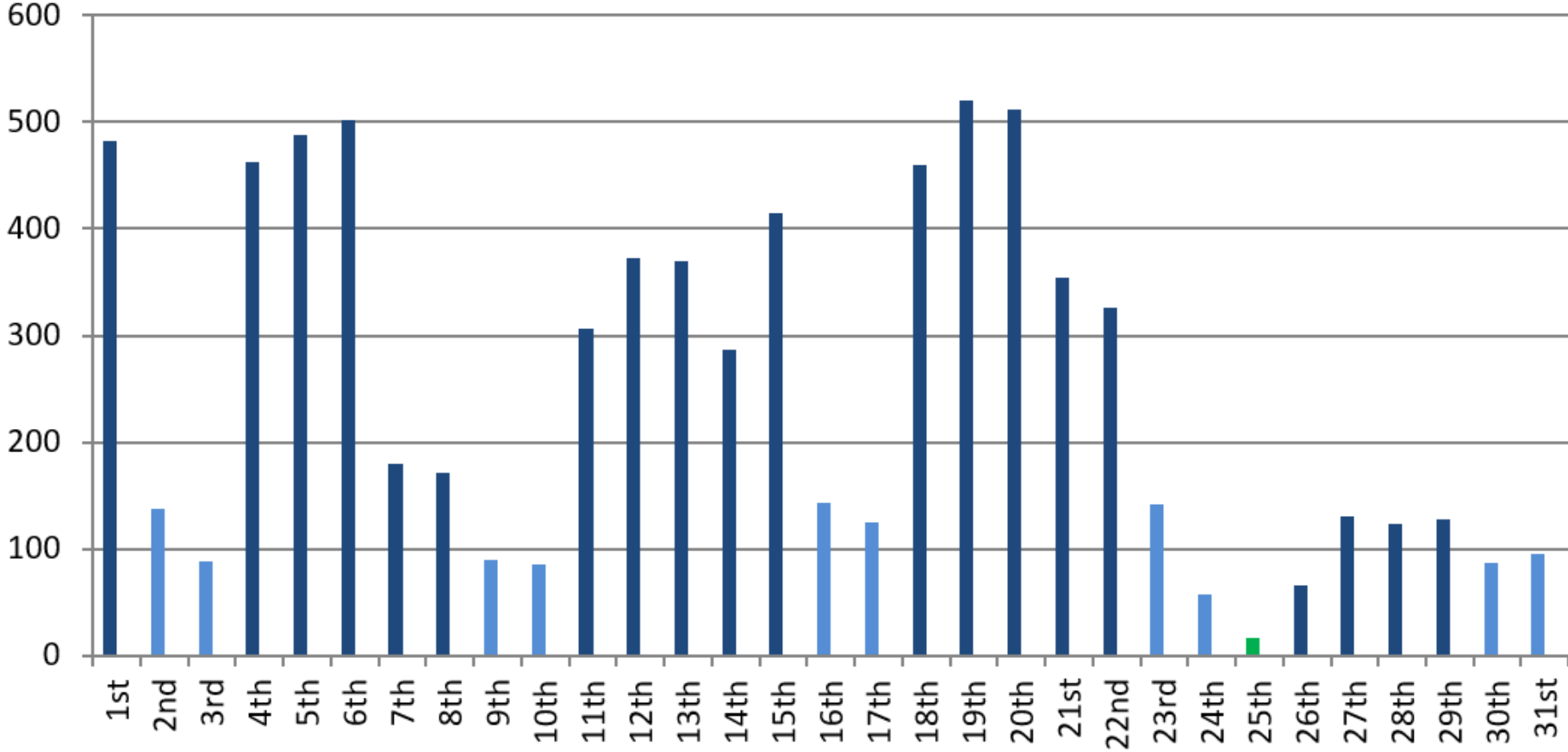
Performance Indicators

December 2017



December 2017

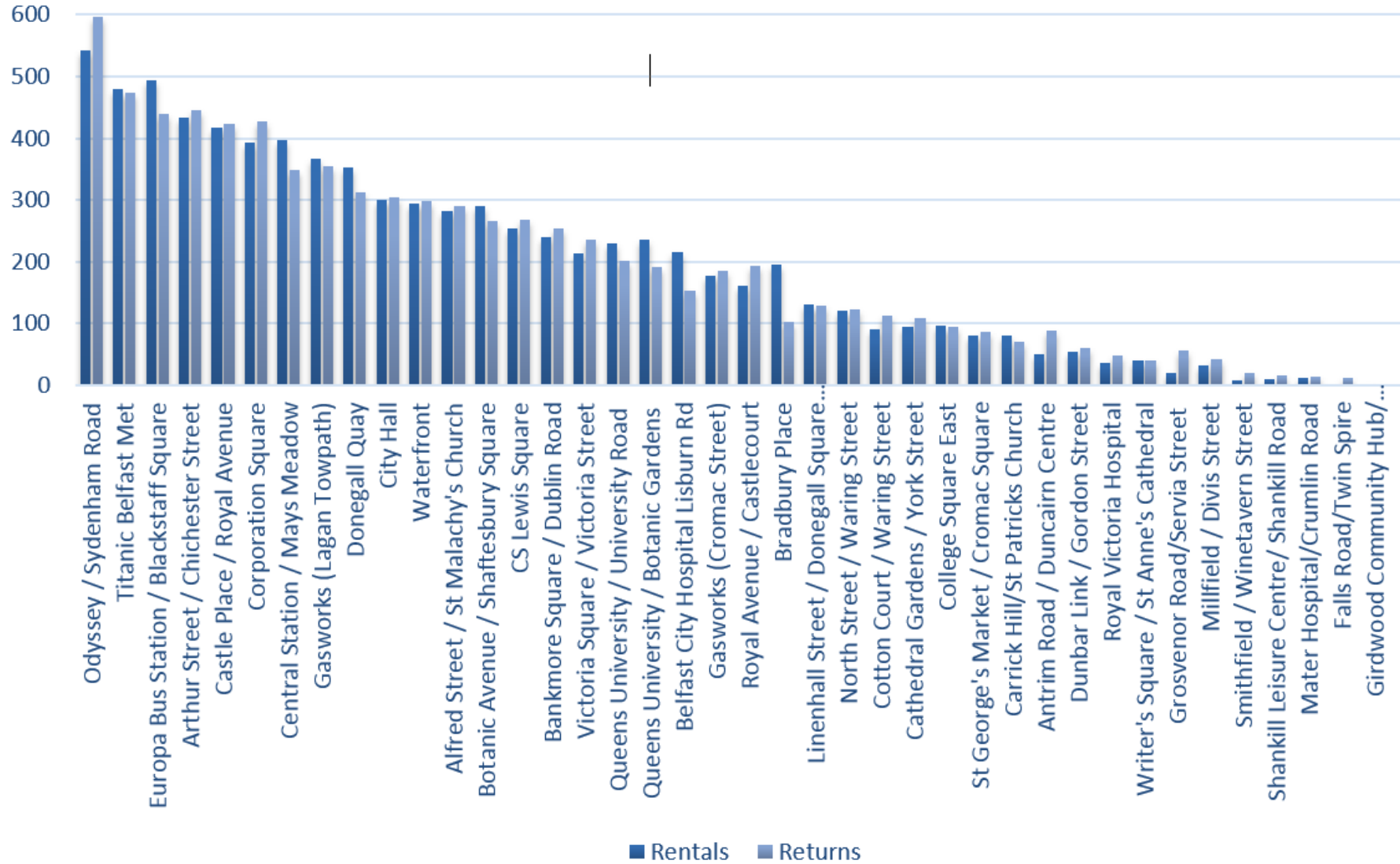
During the month of December, there were ***7,724** rentals. The rental fluctuations are shown below:



*snowy conditions and holiday period affected bike rentals in December

December 2017

The most popular stations in December for renting and returning combined were: (1) Odyssey (2) Titanic (3) Europa/Blackstaff



December 2017

The total rentals to the end of December were **560,155**. The monthly fluctuations of rentals from the launch of the scheme are shown below.

